

Read, understand, and follow all instructions and warnings in this manual before operating this stove.



This stove is for outdoor use only.



This stove is intended to burn solid biomass only. Never add liquids, gels, plastics, or other accelerants into stove.



Metal surfaces will be hot when stove is operating and present a burn hazard.



Not designed for use in heavy rain. Keep Power Module dry.



Follow all local fuel collection and fire-making regulations. Cooking and fire policies vary from season to season and park to park. Only you can prevent forest fires.

Thank you for purchasing a
BioLite CampStove.



The information contained in this instruction manual as well as videos to help clarify operation are available on our website.

<http://www.biolitestove.com/support>



for product and service inquiries, contact:

BioLite
P.O. Box 21905, Brooklyn, NY 11201 USA
support@biolitestove.com
www.biolitestove.com

instruction manual



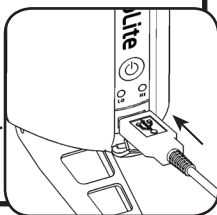
 **BioLite**
CampStove

at home

BEFORE FIRST USE OF THIS PRODUCT, please follow the instructions below on how to charge the rechargeable lithium-ion battery.

Like a car, your BioLite CampStove contains a battery to aid in easy startup. Before first use, it is recommended that you charge the battery with an external power source. **If the stove is unused for more than six months, repeat these steps to ensure your stove's battery is properly charged.**

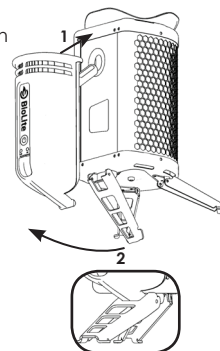
1. Using the included double ended USB cable, connect the USB port on the CampStove's Power Module to a USB charging port (on a computer, laptop, USB wall charger, etc.).
2. The light around the USB port on the Power Module will flash orange while charging.
3. The light will stop flashing and become solid orange when the battery is ready for first use. (May take up to 2 hours.)



start up

Note: "fuel" refers to solid biomass, e.g. wood, pine cones, etc., **never use liquid fuels or charcoal.**

1. Slide Power Module probe into stove body side. There will be a gap between the Power module and the body. This gap is intentional and is not meant to be sealed.
2. Fully extend all legs to lock Power Module in place.
3. Place on level ground away from any overhanging branches. Clear away dry brush on the ground around the stove. Have water handy in case of accident.
4. Place small, loose, and dry fuel in Fuel Chamber. See right for suggestions on firestarting.
5. Light the fuel. Use a long match or the included firelighters to aid in safe firelighting.
6. After ten seconds, push Power Button to start fan. (This sets fan to LO to start oxygen flow.) If fan turns off, push Power Button again.



Fire-building suggestions

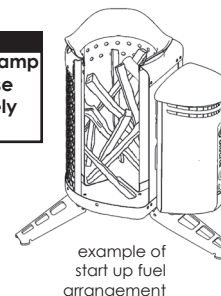
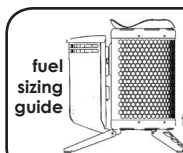
Recommended fuels for best fires:

- Tinder: dried twig shavings, birch bark
- Kindling: dry twigs (e.g. evergreen)
- Use firelighters to aid in firestarting
- Dry, dense fuels will burn hottest and longest (e.g. oak, maple, fir, birch)

Arrangement

- Break twigs to fit. Crisscross dry twigs above the tinder and kindling.
- Loosely fill Stove Chamber. Avoid blocking the jets on the side of the chamber.

NOTE
Avoid using wet or damp wood or leaves. These will smoke excessively and burn poorly.

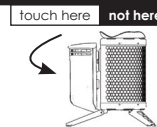


run

1. As fire builds, add larger dry fuel. At this point, you can push Power Button to HI. (This sets fan to HI to increase oxygen flow.)
2. Use Power Button to toggle between LO and HI to optimize fire. The fan indicator light will glow green when set to HI, and orange when set to LO. While the fan has the ability to greatly increase fire efficiency, the high setting can blow out a weak flame. When starting the fire or restarting the fire from embers, use the LO fan setting. As the fire grows to a roar, use the HI fan setting. To cool down fire to simmer, use the LO fan setting.
3. At peak operation, the stove can be packed to the top with fuel.

CAUTION

Metal Surfaces will be hot. While stove is hot or running, only touch plastic parts.



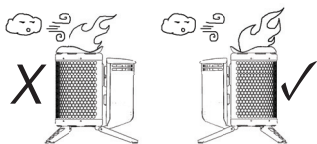
cook

1. Place pot directly onto stove Pot Stand. The pot should be placed so the pot handle is aligned with a Pot Stand support so flames do not heat the handle.
2. During cooking, remove pot carefully and add dry fuel as needed.
3. To simmer, let fire burn down. Push Power Button to return fan to LO.



NOTE

To avoid damage to the Power Module, ensure that it is never downwind of the flame.

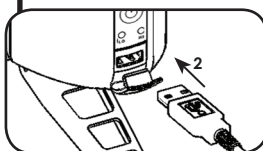


WARNING

- Exercise extreme caution when moving pot or adding fuel as pot and its contents are hot.
- As the pot is placed on the stove, flames may bend around the pot and present a burn hazard.

charge

1. Charging capability is ready when the bar light around the USB port glows green. The bar light above the USB will glow orange when USB is not ready, and green when USB is ready.
2. Attach your device's charging cable to the USB port. Power output varies with the strength of your fire. For maximum output, maintain a well-fueled fire with fan set to HI. Some devices charge continuously. Other devices, like smartphones, will charge in regular intervals of boosted power output.



NOTE

The CampStove supports charging the following:*
Cell phones
Smartphones
MP3 Players
LED Flashlights
Headlamps
Rechargeable Batteries

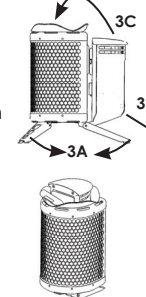
*Not all manufacturer's products may be supported.

WARNING

When plugging and unplugging devices, do so carefully and without touching any metal surfaces as they can burn you. Keep devices away from flames and protected from spills.

shut down

1. Allow fire to burn down to cold ash. For live embers, pour into a dugout hole, extinguish with water, and cover with dirt.
2. The Power Module will turn off automatically as the stove cools. To manually power off, hold Power Button for three seconds. After a manual turn off, the fan may automatically turn back on to keep the Power Module cool and protected from the residual heat.
3. To store the stove after the Fuel Chamber is cool,
A. Fold legs down.
B. Remove Power Module.
C. Slide Power Module into Fuel Chamber.



WARNING

- To protect the stove's components, never pour water into the stove.
- When dumping embers, remember to extinguish and bury embers because live embers can start fires!

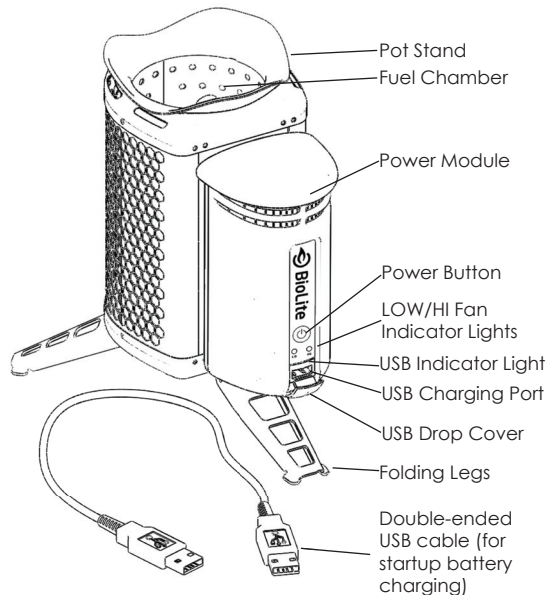
tips+troubleshooting

1. Use dry fuel whenever possible.
2. For hottest and most efficient fire, make sure that there is space between the pieces of wood, the holes on the side of the Fuel Chamber are not blocked, and all wood is entirely inside Fuel Chamber.
3. To avoid excessive smoking, use small twigs to restart a fire from embers.

Problem	Cause	Solution
USB not charging (orange bar light)	Insufficient fire	Add more fuel to fire.
	Battery not charged	Add more fuel to fire to charge battery.
USB not charging (green bar light)		Check cable connection. Unplug cable on both ends and try again.
		Unplug cable on both ends. Hold power button for 3 seconds and wait for the Power Module to automatically turn back on. When charging capability restores, replug cable.
		If problem persists, contact BioLite.
Fan not running when button pressed	Battery not charged (if flashing light) (if no flashing light)	Charge battery by plugging Power Module USB connection to computer.
		Contact BioLite.

for more troubleshooting, please visit www.biolitestove.com

anatomy of your CampStove



specifications

Weight	2 lbs. 1 oz. / 935 grams
Fire Power Output (peak):	3.4 kW [lo mode] 5.5 kW [hi mode]
USB Power Output:	2W @ 5V [max continuous] 4W @ 5V [peak]
Pot Weight Limit:	8 lbs or 1 gallon of liquid

maintenance

cleaning

- **Orange Plastic Power Module**
Remove from stove body and wipe down with a damp cloth with soap and water. DO NOT submerge in water or allow to get excessively wet.
- **Stainless Steel Stove Body**
Clean out all ash and scrub with nylon brush. Dishwasher safe. Dry thoroughly.

storage

- Keep CampStove in a cool, dry, and well-ventilated place.
- Avoid storage in excessive heat.
- Keep out of reach of children
- **If stove is stored for more than six months, the battery may need to be recharged. Follow the instructions in Step 0 to charge your battery.**

Contact Biolite for instructions on properly recycling your stove.

! DANGER

CARBON MONOXIDE, EXPLOSION, FIRE, BURN, & CORROSION HAZARD

CARBON MONOXIDE HAZARD. This stove is for **OUTDOOR USE ONLY**, never for use in tents, vehicles, indoors, or other places without fresh air. Carbon Monoxide inhalation can cause death or brain damage. Carbon Monoxide (CO) is produced when fuel burns.

EXPLOSION - FIRE HAZARD. This stove is intended to burn solid biomass (e.g. wood, pinecones, etc) only. **NEVER add liquids, gels, plastics, or other accelerants into stove.** This stove is hot during use and can ignite flammable materials too close to the flame. Keep flammable materials at least 18 inches from the sides and 48 inches from the top of the stove. Keep gasoline and other flammable liquids and vapors well away from the stove. Clean stove frequently to avoid grease accumulation and possible grease fires. Never leave stove unattended.

BURN HAZARD. Metal surfaces on stove will be hot when stove is operating and present a burn hazard. Handle stove by Power Module only. Flames may be large. Never leave stove unattended when hot or in use. Do not move stove while lit. Keep out of reach of children. Always use on level ground.

BATTERY HAZARD. The rechargeable battery inside the power module may present a risk of fire, explosion, leakage or chemical burn if mishandled. To prevent hazards, keep power module dry to preclude corrosion of the battery. Keep power module and battery well away from other heat sources. Do not expose the battery to excessive physical shock, pressure, or vibration. DO NOT attempt to change the battery yourself. If the battery does not recharge, please contact Biolite for repair information.

READ, UNDERSTAND, AND FOLLOW ALL instructions and warnings in this manual before operating this stove. Failure to comply with the precautions and instructions provided with these stoves can result in property loss or damage, serious bodily injury, or death. Only persons who can understand and follow the instructions should use this stove. Contact Biolite with any questions about safety or operation.

BIOLITE CAMPSTOVE WARRANTY INFORMATION

Biolite has a 1-year limited warranty. Should this product not function properly under normal use within 1 year of purchase, contact BioLite or your local distributor for return process information. BioLite alone will determine if the problem is due to a manufacturing flaw. If so, BioLite will repair or replace the unit at its discretion and return it to you, free of charge.

This warranty does not cover any damage or malfunction arising from misuse, improper maintenance, negligence, normal wear and tear, or accident. The CampStove may only be used as a cooking appliance or charger. Never alter the CampStove in any way or use with any part or accessory not expressly approved by BioLite. This warranty applies only to the original purchaser and proof of purchase is required.

All implied warranties required under law are limited to one year. BioLite shall not be liable for any consequential or incidental damages whatsoever. BioLite shall not be held liable if the product or defect herein causes damage to or failure of other equipment.

This warranty gives you specific legal rights. You may also have other rights that vary from state to state. Some states do not allow the exclusion or limitation of incidental or consequential damages, or limitation or exclusion of implied warranties, so the above exclusions or limitations may not apply to you.